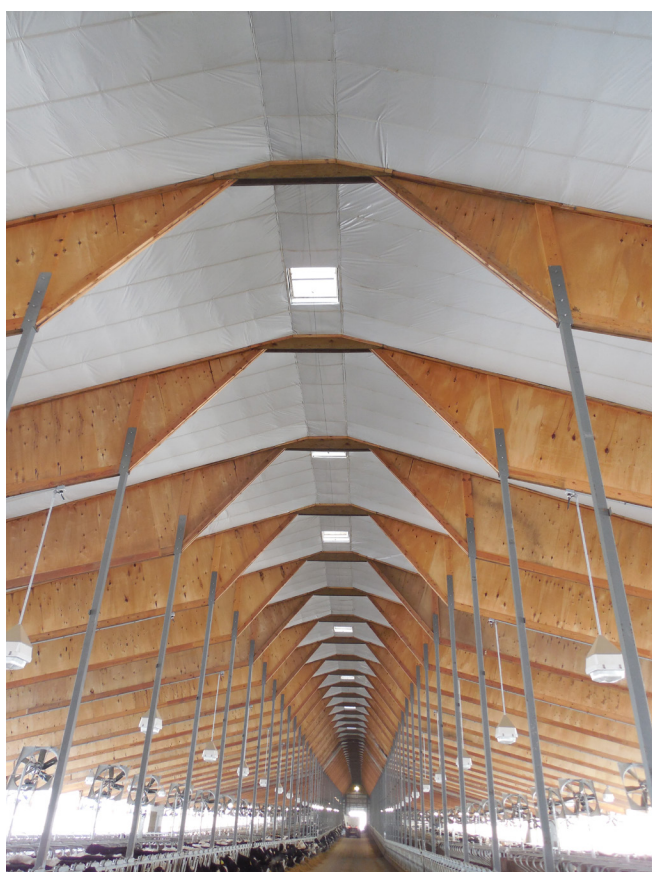


Simple Saver System[®]

Insulation and Finishing System

Post Frame
and multi-use applications



- Higher Installed R-values
- Clean Finished Appearance
- Extremely Durable
- Brightens Interiors
- Lower Energy Costs
- Improved Acoustics
- Inexpensive Solution



 **Thermal Design**
INNOVATIVE ENERGY SAVING PRODUCTS

800.255.0776 | thermaldesign.com

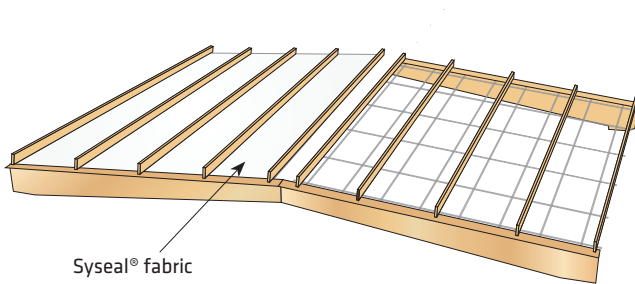
Simple Saver System[®]



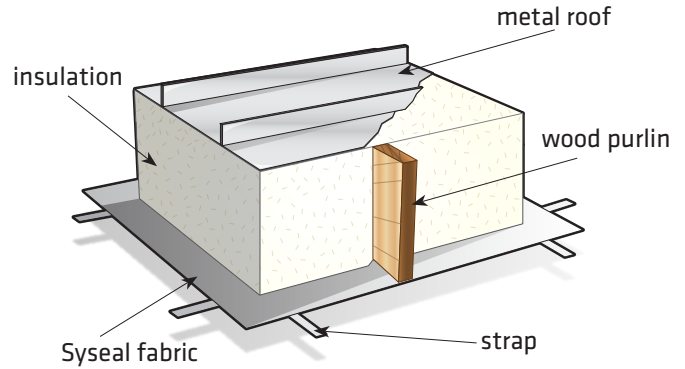
Insulation and finishing liner system used for roof and walls in post/wood frame construction. Simple Saver System[®] is comprised of high strength woven fabric, steel or poly straps, fasteners, sealants and your choice of insulation to fill cavity spaces to desired R-values.

Thermal Design manufactures the Syseal[®] fabric to be custom sized for your building. The large durable, flexible fabric is made to fit each bay span and is an ideal option to follow desired roof angles. Fabric rests upon the strap platform and both the fabric and the strap are fastened at framing members creating the space for designed insulation thickness.

Main Frame Design

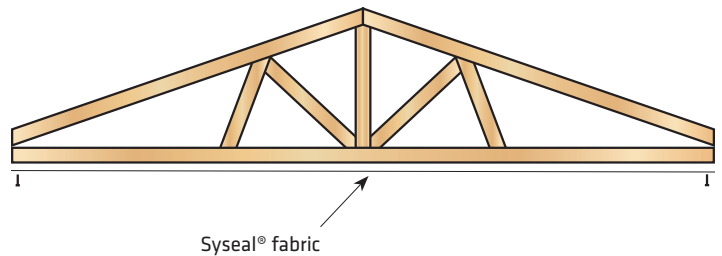


Large fabric liner installed spanning between main frame trusses while concealing wood purlins (secondary framing). Typical fabric liner installation follows the interior roof pitch which allows insulation to be installed between framing located directly under roof deck.



Simple Saver System is an economical and durable solution to create space for uncompressed insulation and instantly create a bright and clean interior.

Attic Design



Large fabric liner installed to the bottom side of the bottom cord wood trusses creates an attic space in the roof. Typical fabric liner installation creates a flat interior ceiling profile which allows more insulation to be installed due to large open attic spaces above the suspended liner system.



A variety of insulation types and methods can be used in conjunction with the Simple Saver System including, but not limited to: blankets, batts and blowing wool.

Syseal® Fabric Woven reinforced high-density polyethylene yarns with UVMAX® coating on both sides with a continuous white or colored polyethylene film.

- Fire Classification Class A (ASTM E84)
- Types I through VI (ASTM C1136)
- Triple extrusion welded seams
- Perm 0.02 grains per hr/sqft (ASTM E96)

UVMAX® Strapping High tensile strength steel with UVMAX coating.

- 100 ksi tensile strength
- 0.02" x 1" x continuous length
- Poly and stainless steel strap available
- Color matched to Syseal® fabric and fasteners

Variety of Colors

- White
- Super White
- Silver Aspen
- Black
- Toni Taupe™
- Metalized

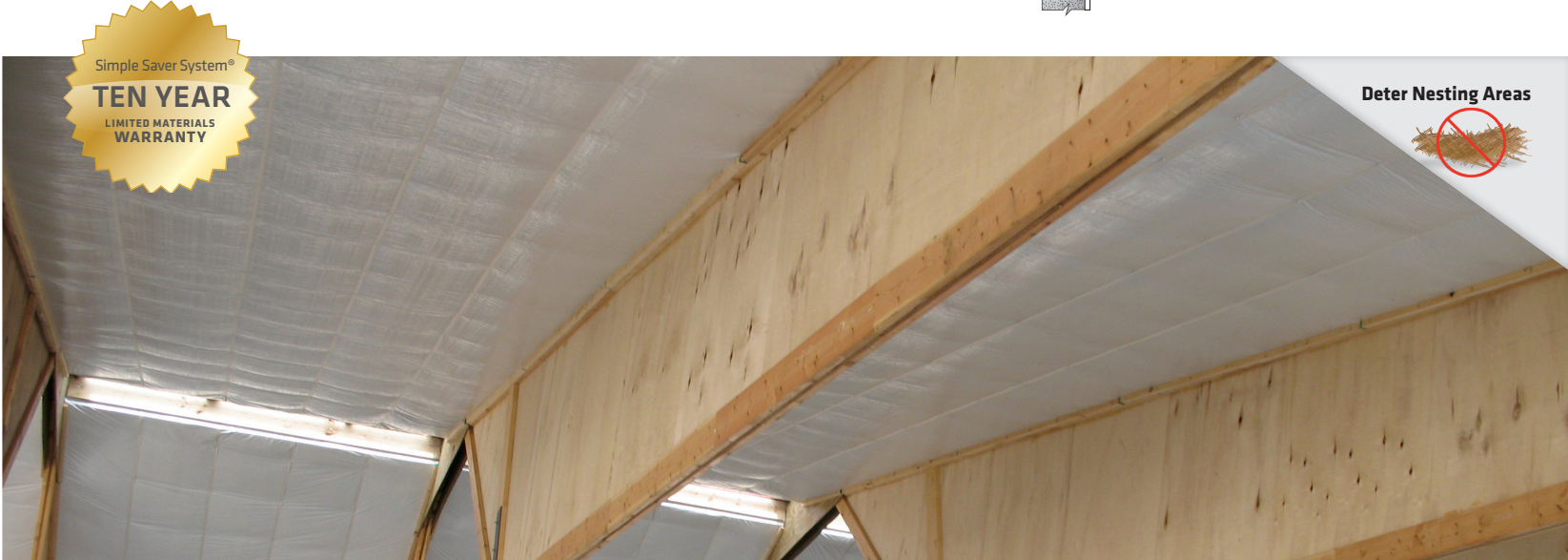
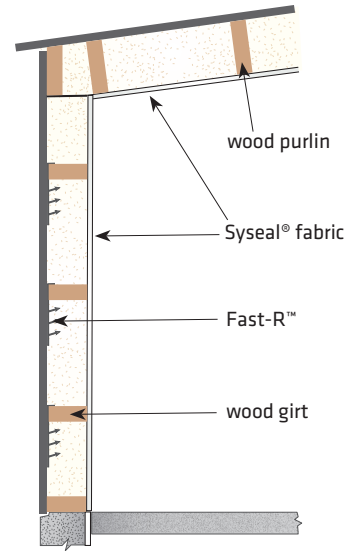
Snap-R® Unique polystyrene thermal block

Quik-Stop™ Closed cell thermal break tape

Fast-R™ Preformed, rigid wall hangers

Sealants Fast application and optimal seal

**Simple Saver System®
Post Frame Roof and Wall**



Many Buildings and Uses

- Agricultural & Livestock Buildings
- Workshops & Warehouses
- Gymnasiums & Arenas
- Manufacturing Facilities
- Equestrian Centers
- Retail Stores
- Worship Facilities
- Aviation Hangers

Thermal Design Provides:

- Experienced consultation and support services
- Custom manufactured materials and detailed project drawings
- Specialized packaging and time delivery
- Custom project instruction and training materials

**CELEBRATING
30+ Years**

Simple Saver Synergy Designsm

Rebalances the insulation, HVAC and lighting components of a building design to target energy efficiency with no additional up-front costs compared to typical design. Supply us with your building information and we will provide a Simple Saver Synergy Design quotesm that includes:

- Insulation, HVAC & light estimates
- Performance comparisons
- Free energy analysis
- Available efficiency incentives

Contact us today and we will prove that it doesn't have to cost more to build an energy efficient building.

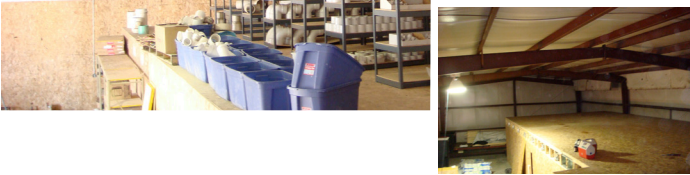
800.255.0776
 thermaldesign.com
 custserv@thermaldesign.com

Thermal Design
 INNOVATIVE ENERGY SAVING PRODUCTS

New Construction

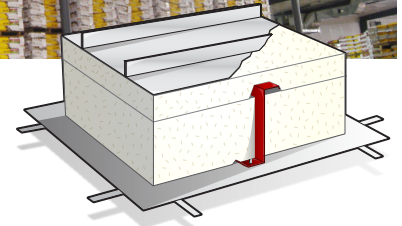


Retrofit Construction

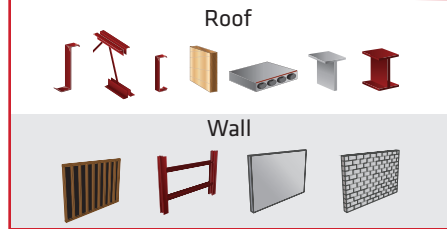


Simple Saver System

has become the #1 specified high R-value insulation system for metal buildings. In addition to superior insulation performance, aesthetics and acoustics compared to traditional designs, the Simple Saver is a patented insulation system that provides OSHA compliant fall protection during the roofing process on zee and cee shaped purlins for pre-engineered metal buildings.



Variety of Building Applications



Contact Your Authorized Distributor:

Guarantees, Warranties and Notices

Simple Saver System® has a ten-year limited material warranty. Specification values are typical data subject to normal manufacturing variations and are not meant to be guaranteed or limiting specifications. Thermal Design, Inc. reserves the right to improve and change component specifications without notice. Go to thermaldesign.com for current published information. Any information contained in the most recent edition of published brochures on thermaldesign.com replaces and supersedes all previous editions. States and/or jurisdictions may have a variety of insulation regulations. Check for specific details regarding the insulation regulations that apply in your area. All trademarks are property of respective parties.

sss_postframebrochure B020190402 | Copyright © 2019 printed in USA

Simple Saver System®

manufactured by:

Thermal Design
INNOVATIVE ENERGY SAVING PRODUCTS
 800.255.0776 | thermaldesign.com